

Promoting Entrepreneurship in Finnish UAS's

Sakari Kuvaja, director
FINPIN

New Learning Environments and Cultural Differences
TA3 meeting, Tampere
May 4th, 2009



FINPIN Finnish Entrepreneurship and Innovation Network for Higher Education
Lahti University of Applied Sciences, Innovation Centre | Kirkkokatu 27 | FI-15140 LAHTI, FINLAND
www.finpin.com | tel. +358 50 309 3229 | fax +358 3 828 2161

Content

- FINPIN
- Pre- and Business Incubation
- Business Succession School
- UAS's Tuli program
- Practice Firms



FINPIN Finnish Entrepreneurship and Innovation Network for Higher Education
Lahti University of Applied Sciences, Innovation Centre | Kirkkokatu 27 | FI-15140 LAHTI, FINLAND
www.finpin.com | tel. +358 50 309 3229 | fax +358 3 828 2161

FINPIN

Finnish Entrepreneurship and Innovation Network for Higher Education



FINPIN Finnish Entrepreneurship and Innovation Network for Higher Education
Lahti University of Applied Sciences, Innovation Centre | Kirkkokatu 27 | FI-15140 LAHTI, FINLAND
www.finpin.com | tel. +358 50 309 3229 | fax +358 3 828 2161

Mission

FINPIN strengthens and promotes knowledge and innovation based entrepreneurship in higher education.



FINPIN Finnish Entrepreneurship and Innovation Network for Higher Education
Lahti University of Applied Sciences, Innovation Centre | Kirkkokatu 27 | FI-15140 LAHTI, FINLAND
www.finpin.com | tel. +358 50 309 3229 | fax +358 3 828 2161

Vision 2010

- FINPIN is the most remarkable entrepreneurship network for higher education in Europe and nationally recognized actor.
- Vision is realized, when
 - Universities of Applied Sciences' pedagogy is developed into entrepreneurship based
 - Network is internationally audited
 - Members of network are invited to join international and national forums
 - There is contractual basis on cooperation between the network and interest groups
 - Network carries out surveys and reports
 - Funding of the network is secured for future years



FINPIN Finnish Entrepreneurship and Innovation Network for Higher Education
Lahti University of Applied Sciences, Innovation Centre | Kirkkokatu 27 | FI-15140 LAHTI, FINLAND
www.finpin.com | tel. +358 50 309 3229 | fax +358 3 828 2161

FINPIN

- FINPIN is founded in 2002
- A community of people who are enthusiastic about entrepreneurship and its promotion
- The main aim of the network's activities is to work in conjunction with the Universities of Applied Sciences and develop activities in a way that supports entrepreneurship
- Network's key sectors of operation are:
 - Pre- and business incubation
 - Business succession
 - Entrepreneurship through R&D
 - Entrepreneurial research
 - Entrepreneurial qualification paths for staff members
 - Entrepreneurial pedagogy
 - Internationalisation
- One of the head quarters of the development networks funded by Ministry of Education
- FINPIN is registered trademark (National Board of Patents and Registration of Finland)



FINPIN Finnish Entrepreneurship and Innovation Network for Higher Education
Lahti University of Applied Sciences, Innovation Centre | Kirkkokatu 27 | FI-15140 LAHTI, FINLAND
www.finpin.com | tel. +358 50 309 3229 | fax +358 3 828 2161

Network Members

- There are two kind of members:
 - Members, who are interested in entrepreneurial issues and work in Universities of Applied Sciences in Finland: 312 persons representing 26 UAS of total 28
 - Associated members, who are interested in entrepreneurial issues and works in other educational institution, company or in other association: 73 persons representing over 40 different organisations from 13 countries
 - from Finland, UK, Ireland, Greece, Spain, China, Estonia, USA etc.
- Membership is personal and free of charge



FINPIN Finnish Entrepreneurship and Innovation Network for Higher Education
Lahti University of Applied Sciences, Innovation Centre | Kirkkokatu 27 | FI-15140 LAHTI, FINLAND
www.finpin.com | tel. +358 50 309 3229 | fax +358 3 828 2161

FINPIN Activities 2002-

- 18 annual and thematic seminars
- 4 Business Advisor –programs
- 14 consultations
- 8 benchmarking and training visits
- Publications
 - Generating Knowledge Based Entrepreneurship: Pre- and Business Incubation in Finnish Polytechnics 2004 (sold out)
 - Ammattikorkeakoulujen rooli yrittäjäpolvenvaihdoksen edistämisessä 2005 (The Role of Polytechnic in Promoting Entrepreneur Generation Change, only in Finnish)
 - Proceedings - University Entrepreneurship-Incubating Processes 2007
 - Proceedings – Promoting Entrepreneurship by Universities 2008
 - Rohkeasti kasvuun - Näkökulmia yrityksen kasvuun ja kehittymiseen 2008 (Bravely to growth – viewpoints of growth and development of enterprise, only in Finnish)



FINPIN Finnish Entrepreneurship and Innovation Network for Higher Education
Lahti University of Applied Sciences, Innovation Centre | Kirkkokatu 27 | FI-15140 LAHTI, FINLAND
www.finpin.com | tel. +358 50 309 3229 | fax +358 3 828 2161

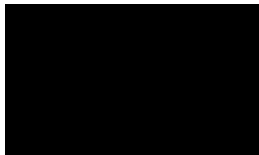
FINPIN Activities 2002-

- International Conferences
 - University Entrepreneurship-Incubating Processes 2006 Lahti
 - Promoting Entrepreneurship by Universities 2008 Hämeenlinna
 - Innovations and Entrepreneurship in Universities 2010 Joensuu
- InnoCentre
- FINPIN Awards
 - person
 - entrepreneur
 - organisation
- EU-reports
 - BSS: Entrepreneurship in higher education, especially within non-business studies
 - FINPIN: Survey of Entrepreneurship in Higher Education in Europe



FINPIN Finnish Entrepreneurship and Innovation Network for Higher Education
Lahti University of Applied Sciences, Innovation Centre | Kirkkokatu 27 | FI-15140 LAHTI, FINLAND
www.finpin.com | tel. +358 50 309 3229 | fax +358 3 828 2161

International FINPIN Conferences



June 11-14, 2006 Lahti
*University Entrepreneurship-Incubating
Processes*

April 20-22, 2008 Hämeenlinna
Promoting Entrepreneurship by Universities
The Proceedings of the FINPIN 2006 & 2008
Conferences: more information & orders available at
www.finpin.com

April 25-27, 2010 Joensuu
Innovations and Entrepreneurship in Universities

Lahti

www.finpin.com | tel. +358 50 309 3229 | fax +358 3 828 2161

FINPIN Board

- FINPIN Board supervises and advises network's activities
 - Jussi Halttunen, President, Jyväskylä University of Applied Sciences (Chair)
 - Risto Ilomäki, President, Lahti University of Applied Sciences (Vice Chair)
 - Matti Jakobsson, President, University of Vaasa
 - Teemu Kokko, Vice President, Haaga-Helia University of Applied Sciences
 - Matti Lähdeniemi, Vice President, Satakunta University of Applied Sciences
 - Olli Mertanen, Vice President, Turku University of Applied Sciences
 - Sakari Kuvaja, Director, FINPIN, Lahti University of Applied Sciences (Presenter)
 - Marja-Liisa Neuvonen-Rauhala, Research Manager, Lahti University of Applied Sciences (Secretary)



FINPIN Finnish Entrepreneurship and Innovation Network for Higher Education
Lahti University of Applied Sciences, Innovation Centre | Kirkkokatu 27 | FI-15140 LAHTI, FINLAND
www.finpin.com | tel. +358 50 309 3229 | fax +358 3 828 2161

Entrepreneurship Promotion



FINPIN Finnish Entrepreneurship and Innovation Network for Higher Education
Lahti University of Applied Sciences, Innovation Centre | Kirkkokatu 27 | FI-15140 LAHTI, FINLAND
www.finpin.com | tel. +358 50 309 3229 | fax +358 3 828 2161

Pre- and Business Incubation

- Methods
 - learning by mentoring
 - learning by doing
 - learning by developing
- Possibility to get credits from acting as an entrepreneur



FINPIN Finnish Entrepreneurship and Innovation Network for Higher Education
Lahti University of Applied Sciences, Innovation Centre | Kirkkokatu 27 | FI-15140 LAHTI, FINLAND
www.finpin.com | tel. +358 50 309 3229 | fax +358 3 828 2161

Business Succession School

- Aims:
 - to give skills for business succession parties to plan and carry out controlled transition
 - to ensure continuation of profitable entrepreneurship and regeneration of business activity



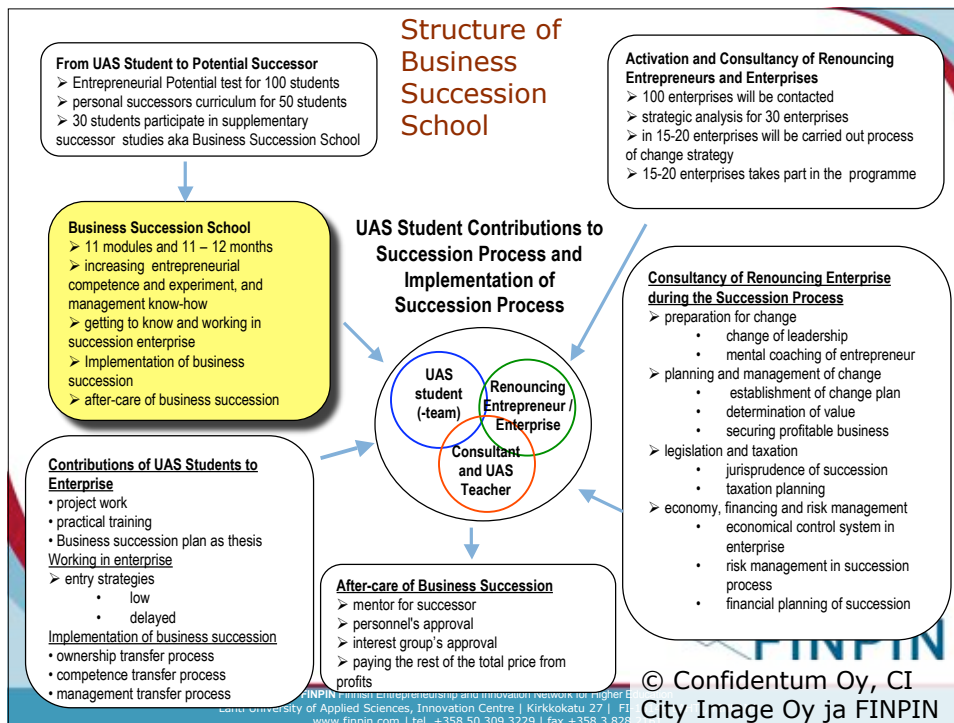
FINPIN OFFICE | Lahti
Lahti University of Applied Sciences, Innovation Centre | Kirkkokatu 27 | FI-15140 LAHTI, FINLAND
www.finpin.com | tel. +358 50 309 3229 | fax +358 3 828 2161

Business Succession School Concept

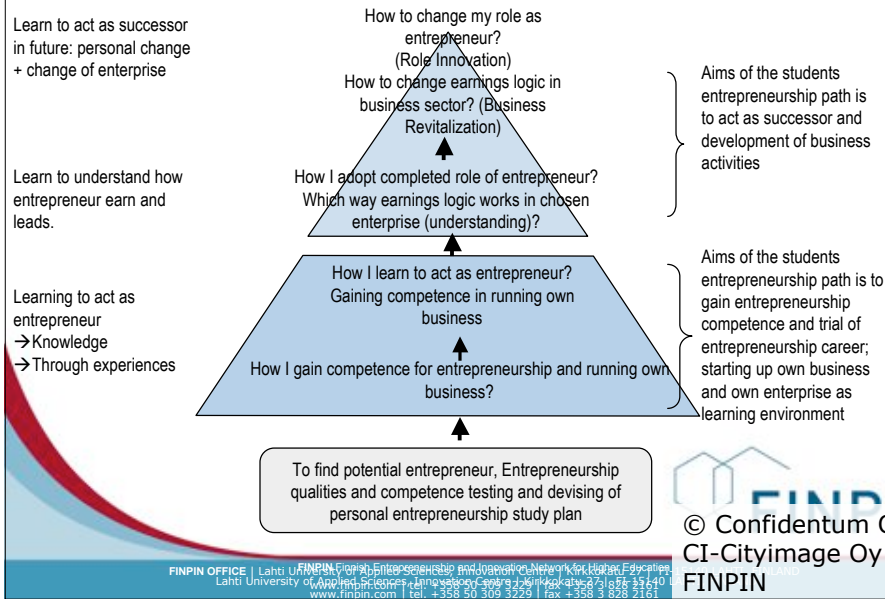
- Pilot: Lahti UAS
- Dissemination:
 - HAMK UAS
 - Turku UAS
 - Jyväskylä UAS
 - Satakunta UAS
 - Laurea UAS
 - Vaasa UAS
 - Tampere UAS



FINPIN Finnish Entrepreneurship and Innovation Network for Higher Education
 Lahti University of Applied Sciences, Innovation Centre | Kirkkokatu 27 | FI-15140 LAHTI, FINLAND
 www.finpin.com | tel. +358 50 309 3229 | fax +358 3 828 2161



Student Entrepreneurs Path through own entrepreneur career and business activities to successor and renewing business



UAS's Tuli Program

- Tekes – the Finnish Funding Agency for Technology and Innovation
- Creating business from research
- Year 2008 -> 23 UAS



Practice Firms

A practice firm is a virtual company that runs like a "real" business silhouetting a "real" firm's business procedures, products and services.



FINPIN Finnish Entrepreneurship and Innovation Network for Higher Education
Lahti University of Applied Sciences, Innovation Centre | Kirkkokatu 27 | FI-15140 LAHTI, FINLAND
www.finpin.com | tel. +358 50 309 3229 | fax +358 3 828 2161

Thank You!

Contact Information

Sakari Kuvaja, director
+358 50 502 0632
sakari.kuvaja@lamk.fi

Jaana Korkalainen, secretary
+358 50 309 3229
jaana.korkalainen@lamk.fi

More Information:

www.finpin.com
http://ec.europa.eu/enterprise/entrepreneurship/support_measures/training_education/index.htm#survey
http://ec.europa.eu/enterprise/entrepreneurship/support_measures/training_education/entr_highed.pdf



FINPIN Finnish Entrepreneurship and Innovation Network for Higher Education
Lahti University of Applied Sciences, Innovation Centre | Kirkkokatu 27 | FI-15140 LAHTI, FINLAND
www.finpin.com | tel. +358 50 309 3229 | fax +358 3 828 2161